



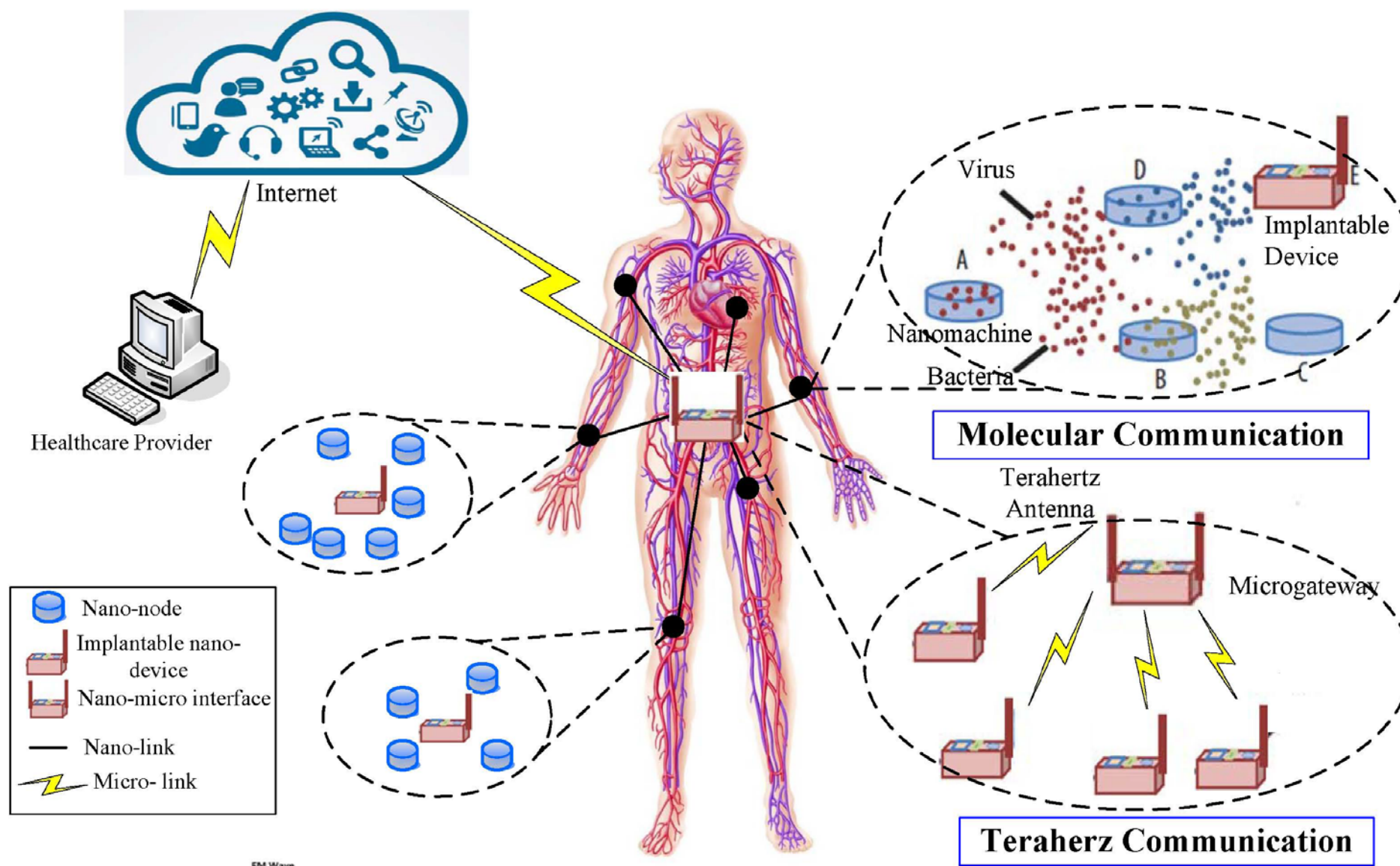
TeraFlag: King's College London Contributions



Leveraging on King's strengths in system architecture design and security, the following contributions are proposed:

- **System Architecture which enables THz communications as a new RAT, with design pertaining to Access Network & Core Network Functionalities**
- **Communications protocol design in access and core networks which are tailored to extremely high-bandwidths and very low-latency of THz RATs**
- **Development of security primitives which can cater for THz needs and withstand quantum-attacks which we believe to be operational by 2030**
- **Prototyping of solutions, testing and preparation for standards submissions in 5-10 years time to ensure impact and scale**

#1: Architecture & Security



#2: Bio-Nano Comms



Thank you!